

Sedentarism, obesity and other growth-related issues in the younger population

Why the next generation of citizens may have more health issues



Introduction

Kids buy many fat-based foods in the cafeteria, so *what are their lifestyles?*

Can the presence of fat-based foods affect the students?

Could genetics play a role?

What about religion?

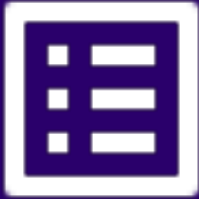
And socioeconomic status?



Summary



Methodology



Ins. JVV

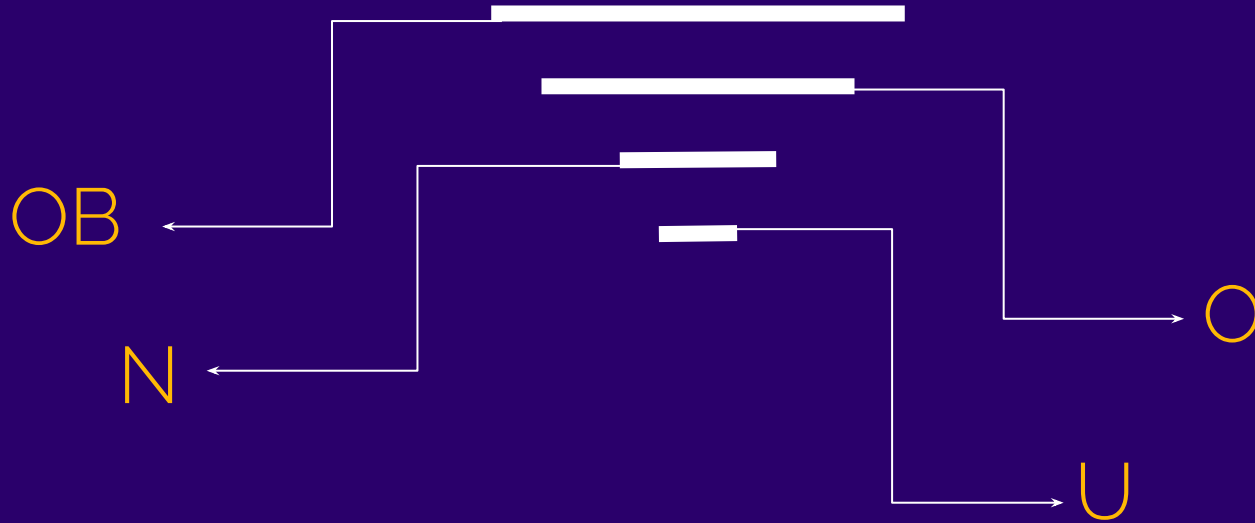


Annexa

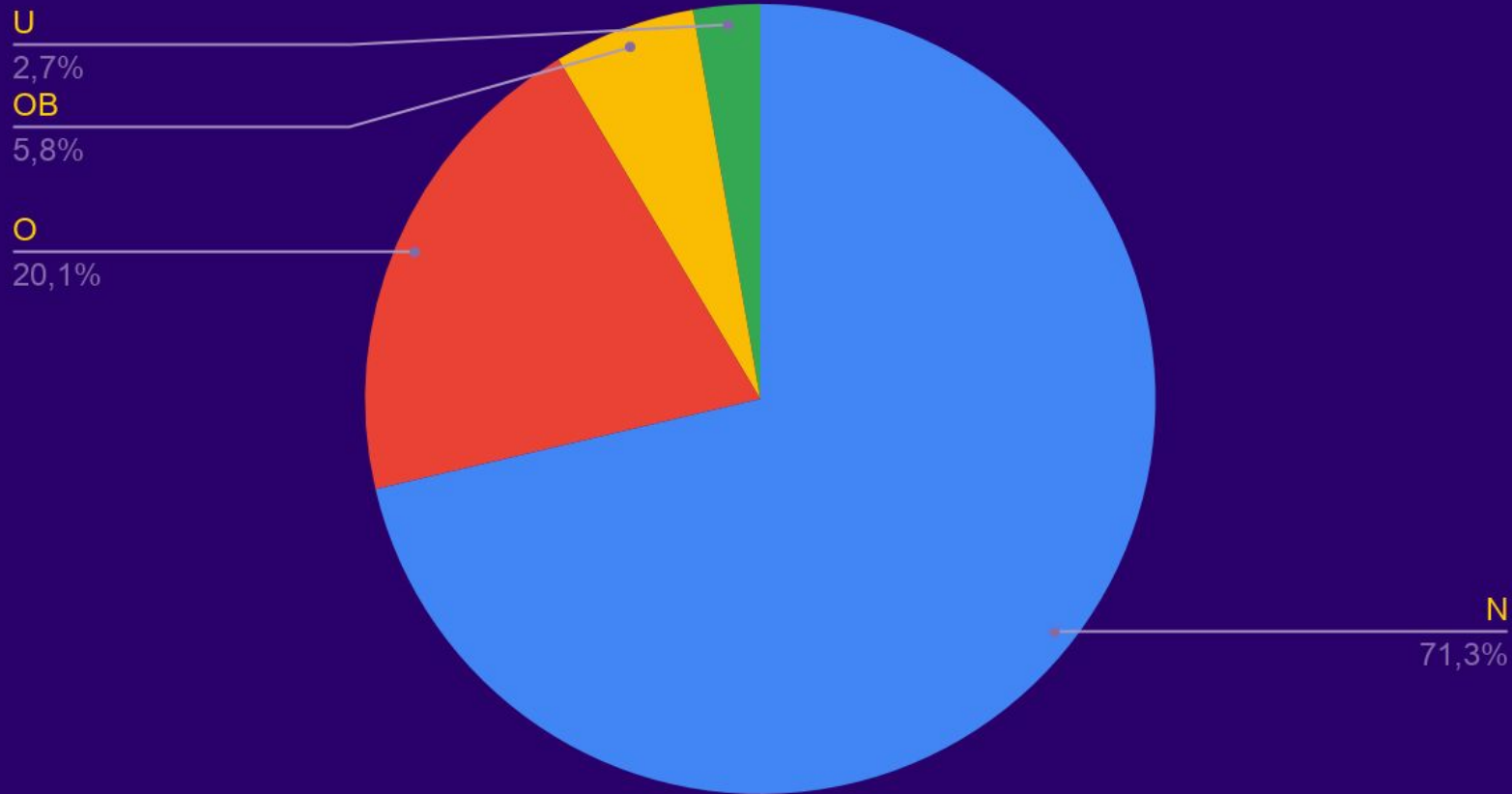


USA

Data Analysis

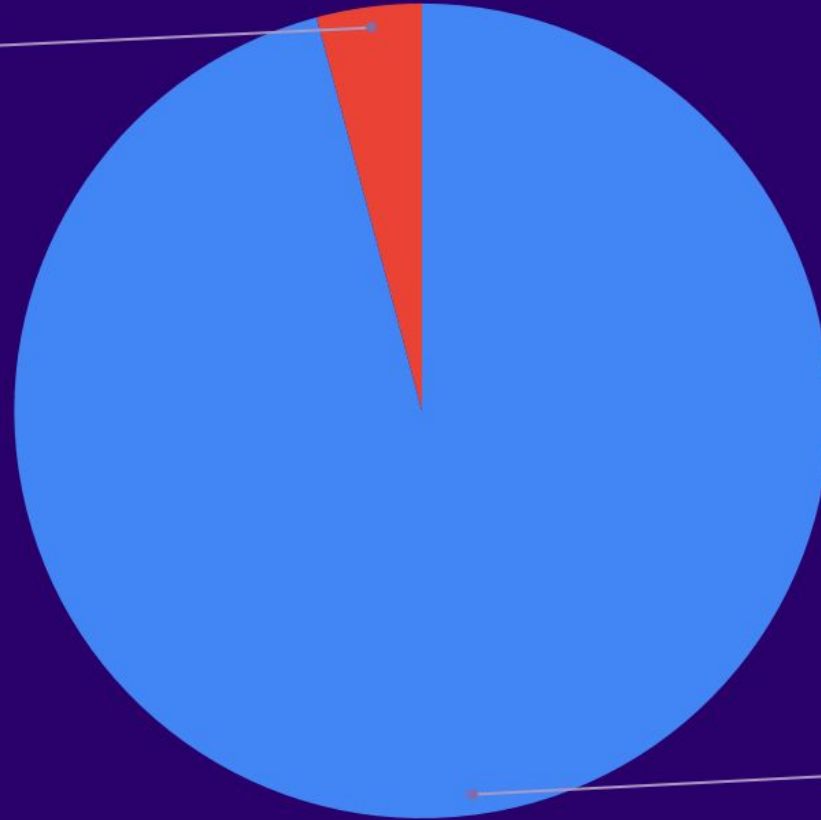


Count and classification of students [JVW]



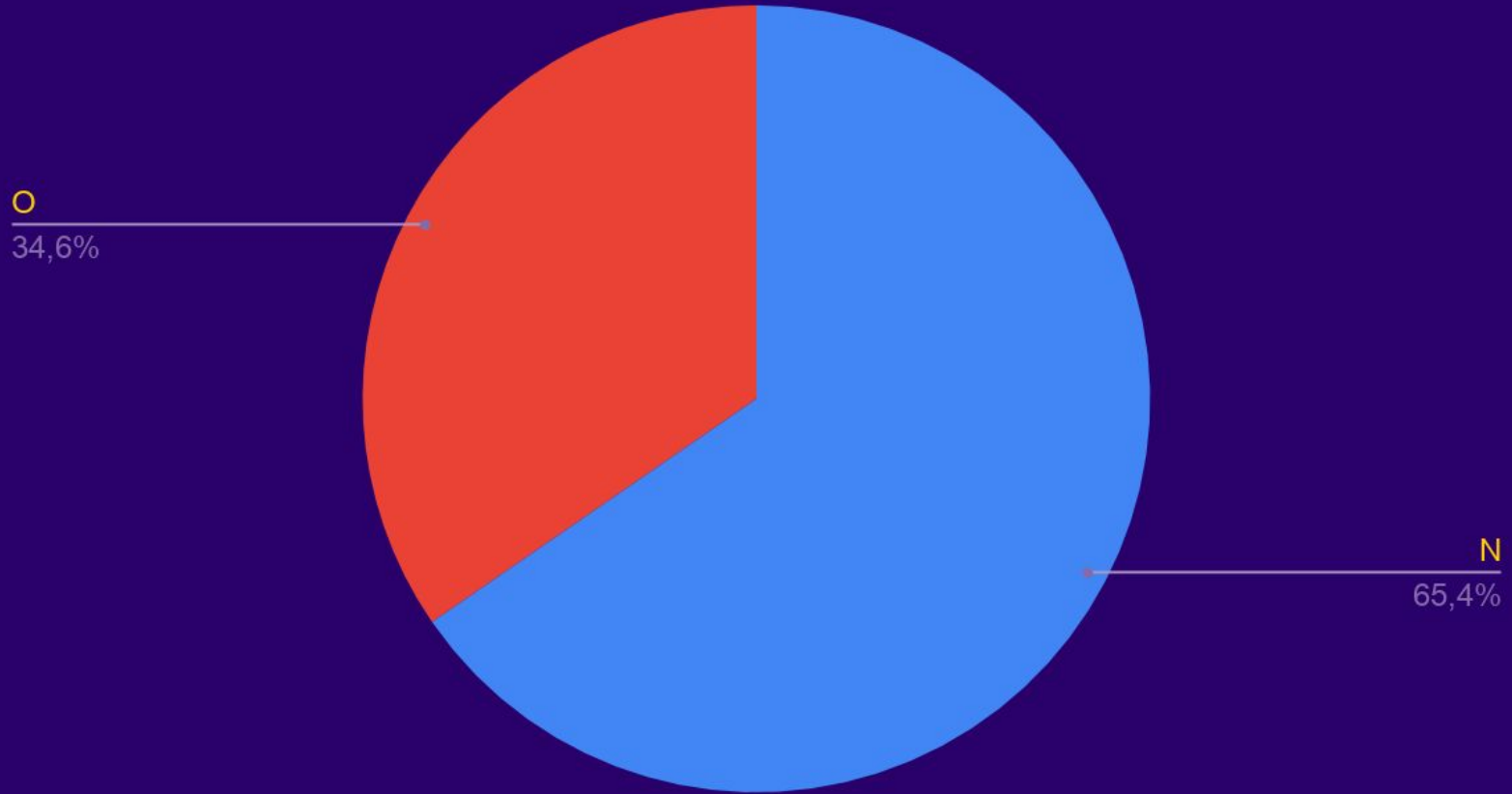
Count and classification of students [Annexa]

O
4,2%

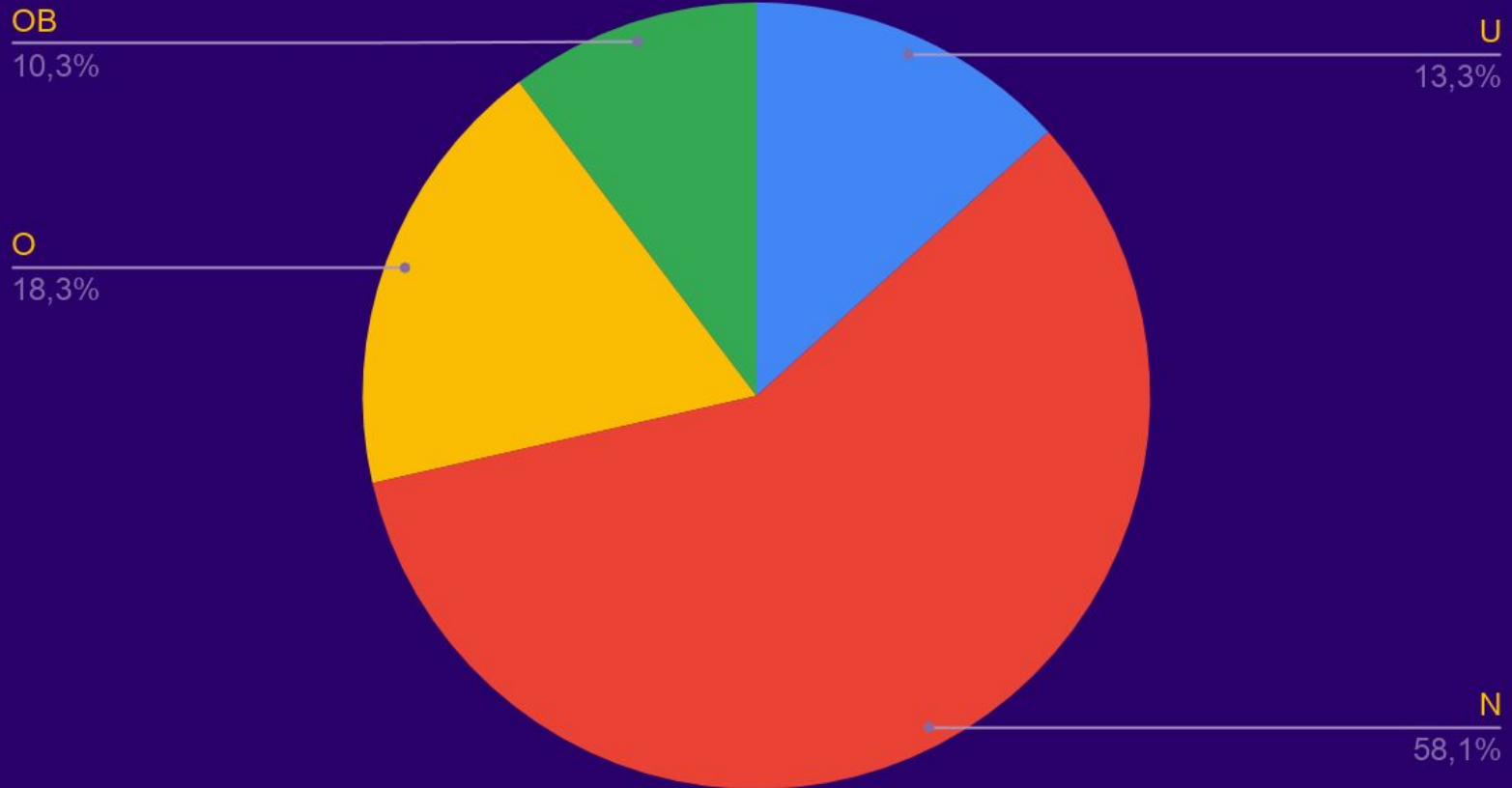


N
95,8%

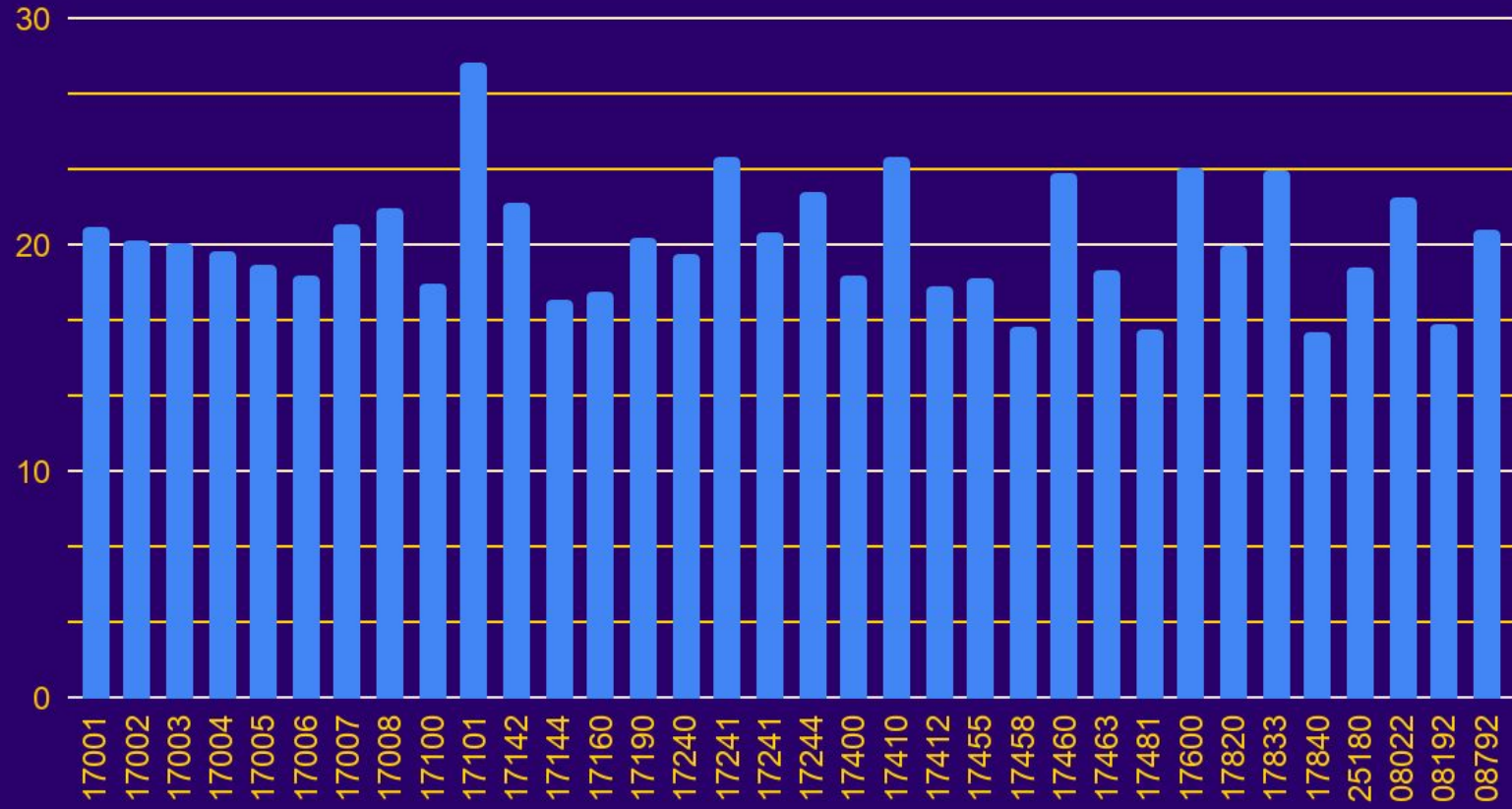
Count and classification of young people [CAT]



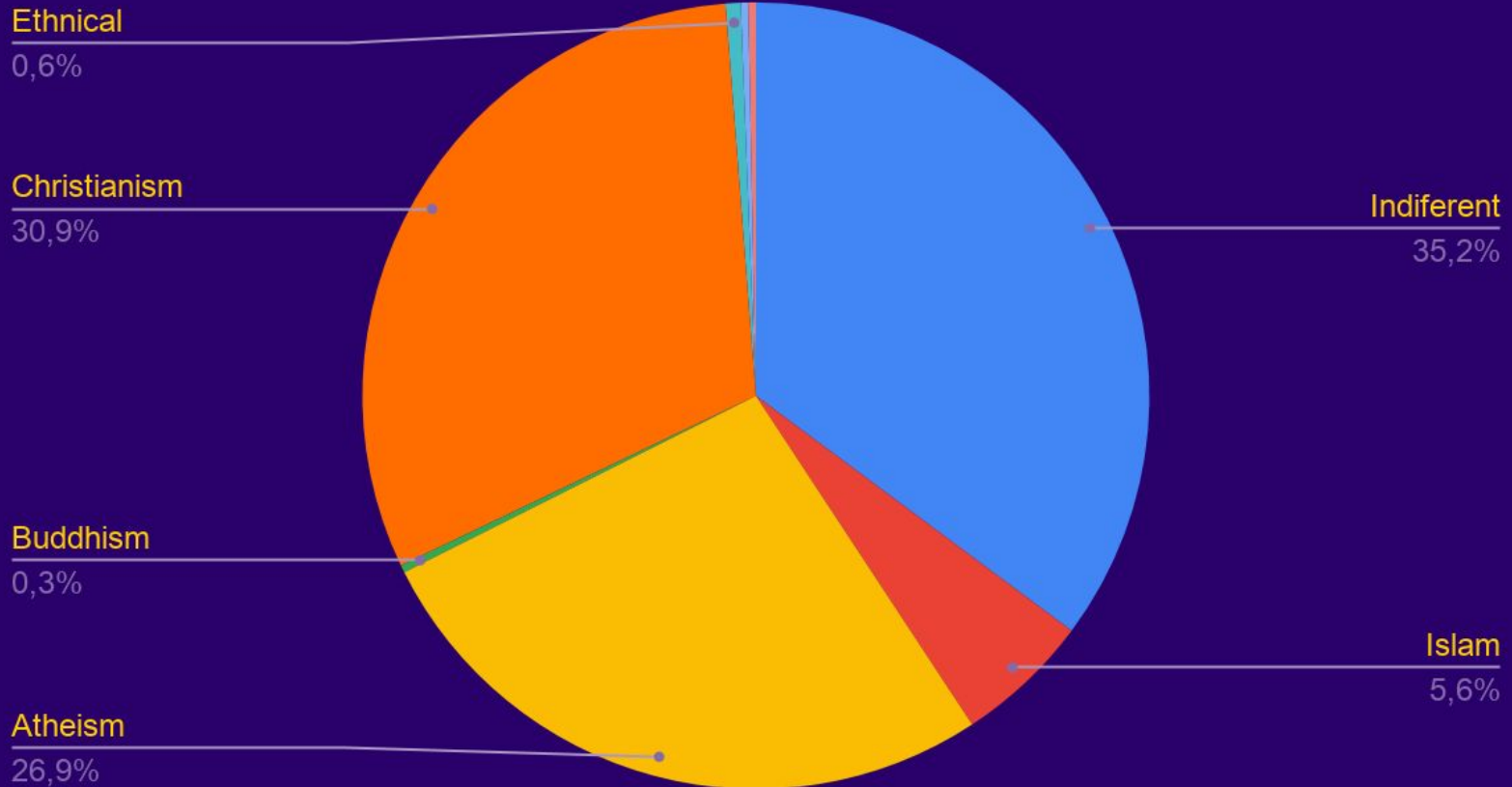
Count and classification of young people [ES]



BMI classified by Postal Code



Religious beliefs [JVV]



Religious beliefs [CAT]

Indiferent

2,7%

Ateism

19,3%

Agnosticism

9,1%

Jehovah witnesses

1,0%

Orhodoxical catolicism

1,3%

Islam

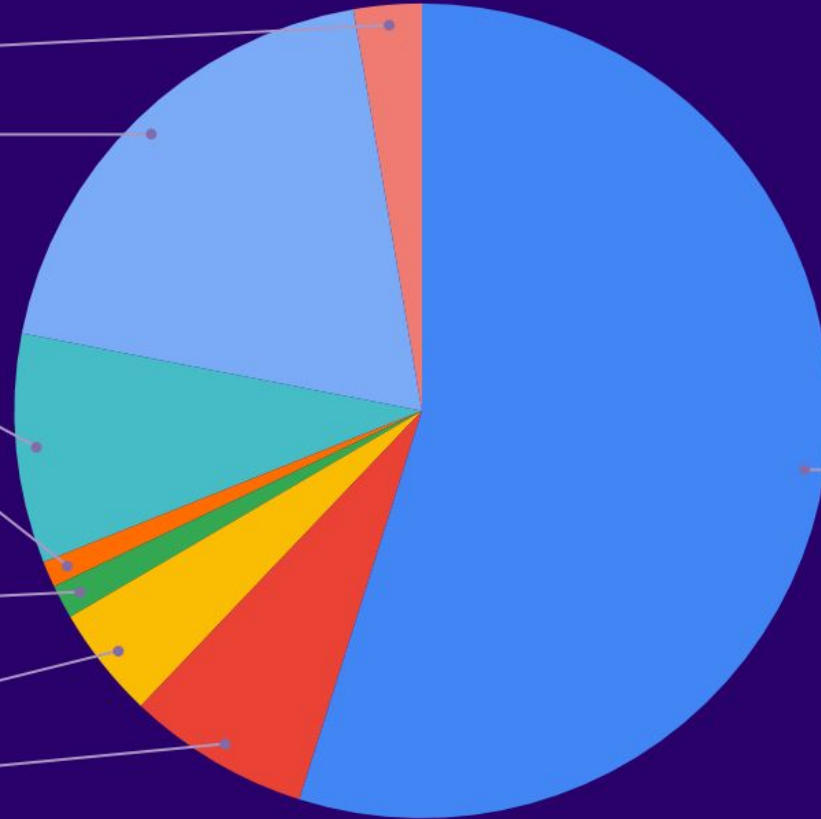
4,5%

Evangelical catolicism

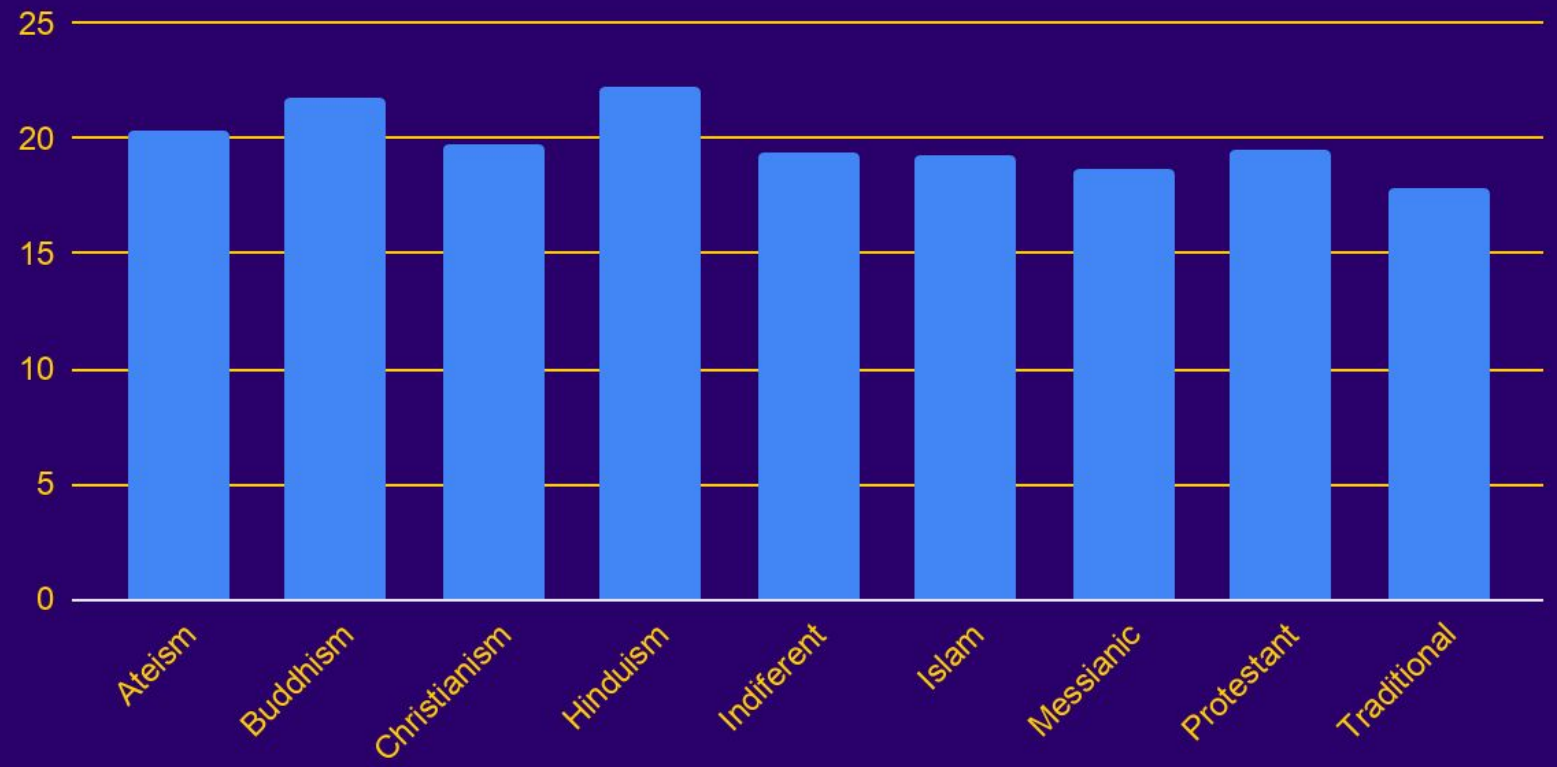
7,2%

Catolicism

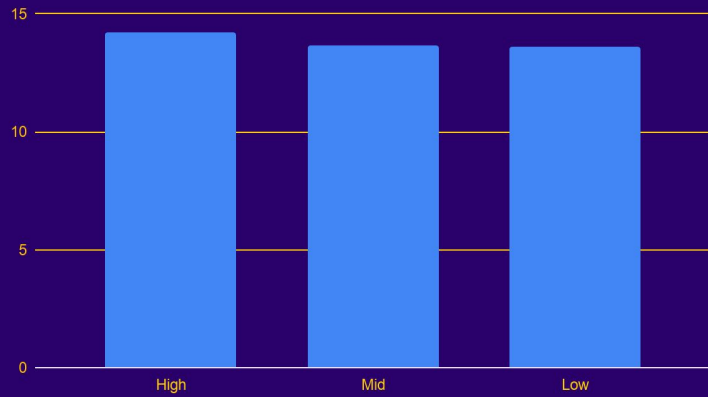
54,9%



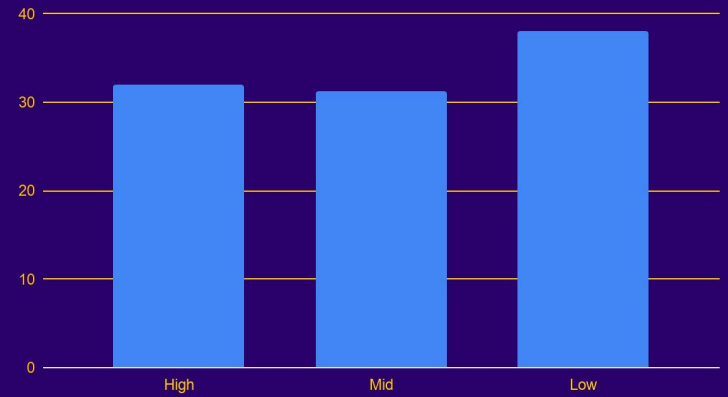
BMI classified by religion



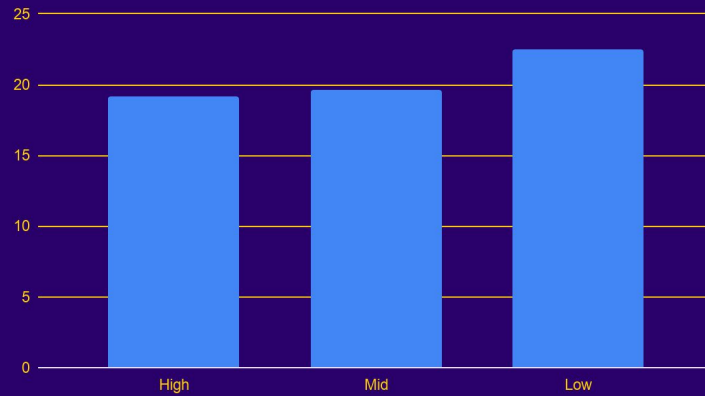
BMI organized by socioeconomic bracket [MIN]



BMI organized by socioeconomic bracket [MAX]



BMI organized by socioeconomic bracket [MED]



Conclusions



Bibliography

- **In-house** (2021) Sedentarisme en el jovent. Retrieved 18:35 CEST, April 13, 2021, available from: <https://peiphy.xyz/formulari> (own website)
- **In-house** (2021) Sedentarisme en el jovent. Last retrieved 16:33 CEST, February 14, 2021, raw data from: https://docs.google.com/forms/d/e/1FAIpOLSc2D7IKPlgg1_F-YhsW7OoPvRJNwZmnCREsgX93kTE5N4iWxw/view_analytics Last retrieved 18:35 CEST, April 13, 2021, purified data from: https://docs.google.com/forms/d/e/1FAIpOLSc2D7IKPlgg1_F-YhsW7OoPvRJNwZmnCREsgX93kTE5N4iWxw/view_analytics
- **INE** (2018) Índice de masa corporal población infantil según sexo y país de nacimiento. Población de 2 a 17 años. Retrieved 08:45 CEST, April 13, 2021, from: <https://www.ine.es/jaxi/Tabla.htm?path=/t15/p419/a2017/p06/&file=01010.px>
- **IDESCAT** (2019) Indicadors de benestar i progrés social - Excés de pes en la població de 6 a 12 anys Retrieved 08:45 CEST, April 13, 2021, from: <https://www.idescat.cat/pub/?id=indbps&n=9429>
- **Dep. Just. - GenCat** (2019) Baròmetre sobre la religiositat. Retrieved 11:58 CEST, April 15, 2021, from: <http://justicia.gencat.cat/ca/ambits/afers-religiosos/estudis/barometre/>
- **Kinderzeit** (2018) Calculating Your Child's BMI Retrieved 11:58 CEST, March 12, 2021, from: [https://www.kinderzeit.org/en/kids-bmi/? \[...\]#bmi-percentiles-for-children](https://www.kinderzeit.org/en/kids-bmi/? [...]#bmi-percentiles-for-children)

Acknowledgements



Institut Jaume Vicens Vives



Generalitat de Catalunya
**Institut d'Estadística
de Catalunya**

Google

INĒ

Instituto Nacional de Estadística

This slideshow is dedicated to those teachers who know how to make you love their subject; to Florence Nightingale, mother of the current nursing system; and to Adrià Saperas, who disappeared midway through the second term.